

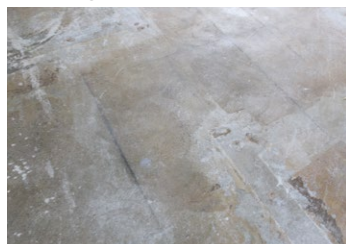
SCHÖNOX | CASE STUDY: COMMERCIAL APPEAL HEALTHCARE CONVERSION

Project Name: Commercial Appeal Healthcare Conversion
Project Location: Memphis, TN
Contractor: The Ransomed Group and Carpet Contractors
Existing Substrate: Uneven, damaged concrete with residual adhesives, VCT, and ceramic flooring
Products Used: Schönox VD, SHP, XM, and AP



Like several commercial facilities across the U.S., the four-story, 140,000 square foot, Commercial Appeal newspaper office and production building was converted for healthcare use in the wake of the COVID epidemic. The Commercial Appeal building's historic property location has been home to three Memphis newspapers including Commercial Appeal, as well as a Ford Model T factory. The most recent building on the site saw decades of newspaper office and production use with massive printing presses. U.S. Army Corps of Engineers and Tennessee Emergency Management Agency spearheaded the initiative with aggressive timelines for all facets of the project. The subfloors throughout the extensive facility required a comprehensive, time-sensitive plan.

Existing Substrate



Existing VCT suspected of asbestos content and residual adhesives were present in a number of areas. The project plan called for Schönox products which could cover these areas rather than remove them.

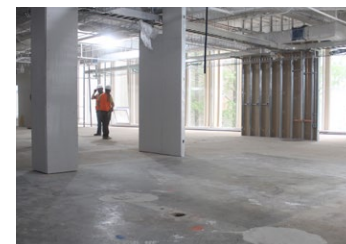


Substrates with years of service reflected the weight and regular use of printing presses and support equipment.



The removal of dividing walls and heavy equipment left indentations and voids throughout the building.

Preparation



The extensive floor space, variety of subfloor issues, and tight project window required a subfloor plan that would result in smooth, sound subfloors ready for floor covering in just three days.

Priming: Schönox VD and SHP

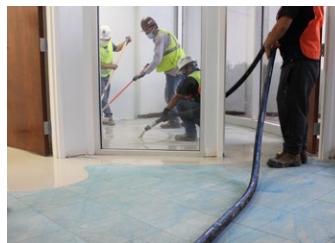


The entire project space was primed using Schönox VD or Schönox SHP based on the porosity of the substrate conditions. Schönox SHP is especially effective in priming diverse substrates with residual floor covering materials.

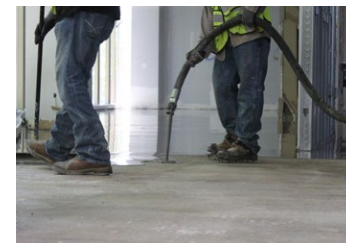
Leveling



Given the expanse of the project space, Graco SL340e and MP40 pumps were used with both the cementitious and synthetic gypsum based, Schönox self-leveling compounds.

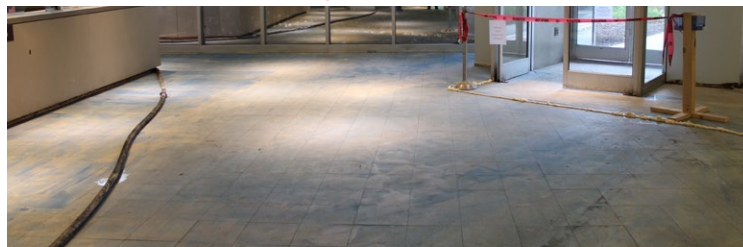


Schönox AP, synthetic gypsum, self-leveling compound, was used to cover several challenging substrates including the tile shown here.



Concrete subfloor areas without residual substrate materials or complicating issues were covered with Schönox XM, cement-based, self-leveling compound, which provides a cost-effective application.

Renovated Subfloor – Going from Here to There



The Schönox Rapid Healthcare Conversion Initiative gave these old newspaper production floors new life as emergency healthcare spaces in record time.

Take your business to a whole new level.
Call 855.391.2649 or visit hpsubfloors.com to learn how your projects run smoother with Schönox On It.

