

SCHÖNOX | CASE STUDY: MINNEAPOLIS GRAIN EXCHANGE

Project Name: Minneapolis Grain Exchange

Project Location: Minneapolis, MN

Contractor: Sonus Interior

Existing Substrate: Old wood floors with heavy amounts of carpet glue

Products Used: Schönnox **SHP, AST, and AP**

Flooring Product: Space being prepped for rent. Final floor not specified.

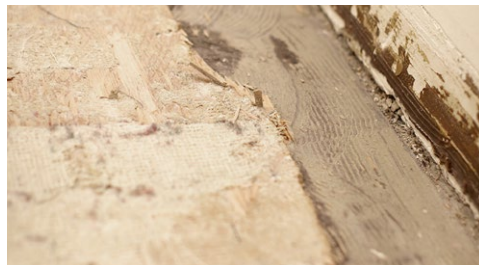


Now a thriving office and commercial center, the Minneapolis Grain Exchange was built in 1902. Listed on the National Register of Historic Places, tenants appreciate the blending of the historic structure with modern amenities. Renovations within the building are common necessitating special subfloor products to address the challenges that come with a building occupied for over 100 years.

Existing Substrate

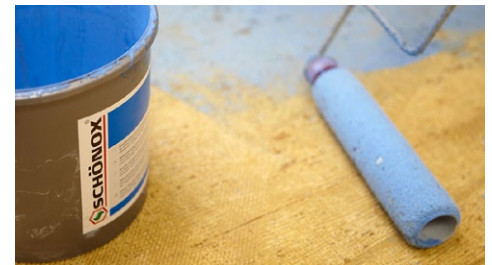


The plywood was loose in spots and separating in others.



The subfloor was uneven throughout the space.

Priming: Schönnox SHP



SHP ready-mixed acrylic primer, is applied over the top of the old carpet glue and plywood.

Patch and Repair: Schönnox AST



Schönnox AST, synthetic gypsum-based, rapid drying, smoothing and patching compound, provides a smooth finish on various substrates. It can be installed as a true featheredge over a variety of critical substrates.

Leveling: Schönnox AP



Schönnox AP, synthetic gypsum, self-leveling compound, can be walked on in approximately 2 hours and covered in approximately 24 hours.



AP is extremely strong curing to 5800 psi.

Renovated Subfloor – Going from Here to There



When dry, Schönnox AP is free of cracks and has no shrinkage making it ideal for renovations and critical subfloors. The product dries smooth ready to receive any type of floor covering.

Take your business to a whole new level.
Call 855.391.2649 or visit hpsubfloors.com to learn how your projects run smoother with Schönnox On It.

