

# MULTI-FAMILY SUBFLOOR PROBLEMS? MEET THE SCHÖNOX FAMILY OF SUBFLOOR SOLUTIONS.



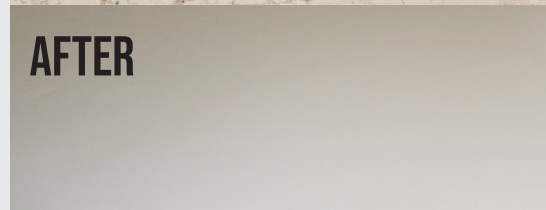
## ARE YOU FACED WITH SUBFLOOR ISSUES?

Just vacuum, prime and pour Schönox AP/APF synthetic gypsum self-leveling compounds to make your old floors look like new again. Use Schönox AST, the genius synthetic gypsum rapid drying smoothing and patching compound, to achieve a true featheredge.

**BEFORE**

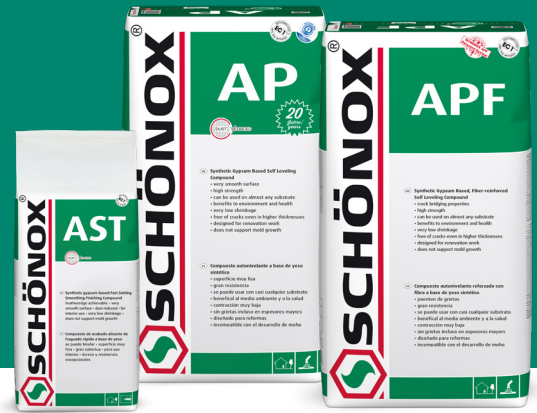


**AFTER**





# THE SCHÖNOX FAMILY OF SYNTHETIC GYPSUM PRODUCTS



## SCHÖNOX AST SYNTHETIC GYPSUM, RAPID-DRYING, SMOOTHING AND PATCHING COMPOUND



Schönox AST is a rapid-drying, synthetic gypsum-based compound used to provide a very smooth, level finish on various interior substrates. It is suited for:

- Concrete, cement, gypsum, and wooden substrates
- Floor leveling compounds
- Old substrates, such as vinyl flooring
- Old water-resistant adhesive residues

Schönox AST can be installed as a true featheredge.

Does not contribute to mold growth

Dust Reduced

Compressive Strength: 3600 PSI

## SCHÖNOX AP PUMPABLE SYNTHETIC GYPSUM SELF-LEVELING COMPOUND



Schönox AP is a synthetic gypsum-based self-leveling compound for the smoothing and leveling of substrates under flexible coverings and wood floors with layer thicknesses of at least 1/8". Designed for interior areas, Schönox AP is suited for:

- Gypsum, concrete, and cement based substrates
- Ceramic tile, terrazzo, and sheet vinyl
- Old water-resistant adhesive residues
- OSB board and plywood

Schönox AP can be installed to layer thicknesses of 1/16" to 2".

Does not contribute to mold growth

Dust Reduced

Compressive Strength: 5800 PSI

## SCHÖNOX APF PUMPABLE SYNTHETIC GYPSUM, FIBER REINFORCED SELF-LEVELING COMPOUND



Schönox APF is a fiber-reinforced, synthetic gypsum-based self-leveling compound for wood floors and critical interior substrates. With embedded fibers that make reinforcement fabric unnecessary, Schönox APF can be used on:

- Timber floorboards, OSB board, and plywood
- Wood-cement boards
- Substrates such as ceramic tile, terrazzo, and sheet vinyl
- Water-resistant adhesive residues
- Concrete, cement, and gypsum substrates
- Sound insulating underlayments

Schönox APF can be installed to layer thicknesses of 1/8" to 1".

Does not contribute to mold growth

Dust Reduced

Compressive Strength: 6200 PSI



All Schönox synthetic gypsum compounds are manufactured and packaged using the dust-reduced technology developed by Schönox.



May help contribute to LEED v4 certification of projects in these categories:

- EQc2 – 3 points  
Low-Emitting Materials

- MRc1 – up to 2 points Life-Cycle Impact Reduction
- MRc2 – 1 point Environmental Product Declaration
- MRc4 – 1 point Material Ingredient

\*Refer to Technical Data Sheets for additional, current information. Available on the Schönox App and hpsubfloors.com.

- UL classified in accordance with ASTM E84(ANSI/UL 723):  
Flame Spread 0; Smoke Development 0
- Environmental Product Declaration (EPD)  
Declaration number: EPD-DIV-2013311-EN

Take your business to a whole new level. Call 855.391.2649 or visit [hpsubfloors.com](http://hpsubfloors.com) to learn how your projects run smoother with Schönox On It.

